

# Beolab 50 & 90

with Beoconnect Core



# Connecting to Beolab 50 & 90

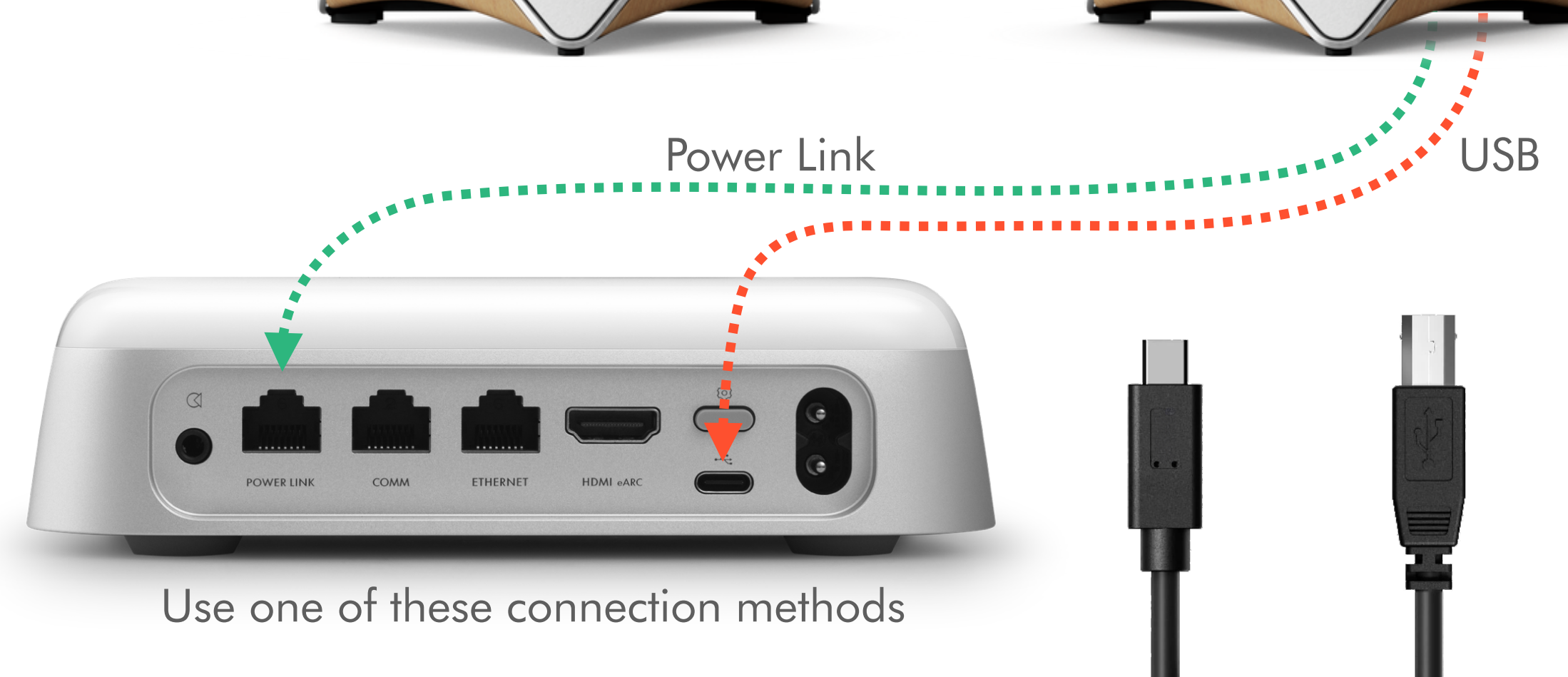
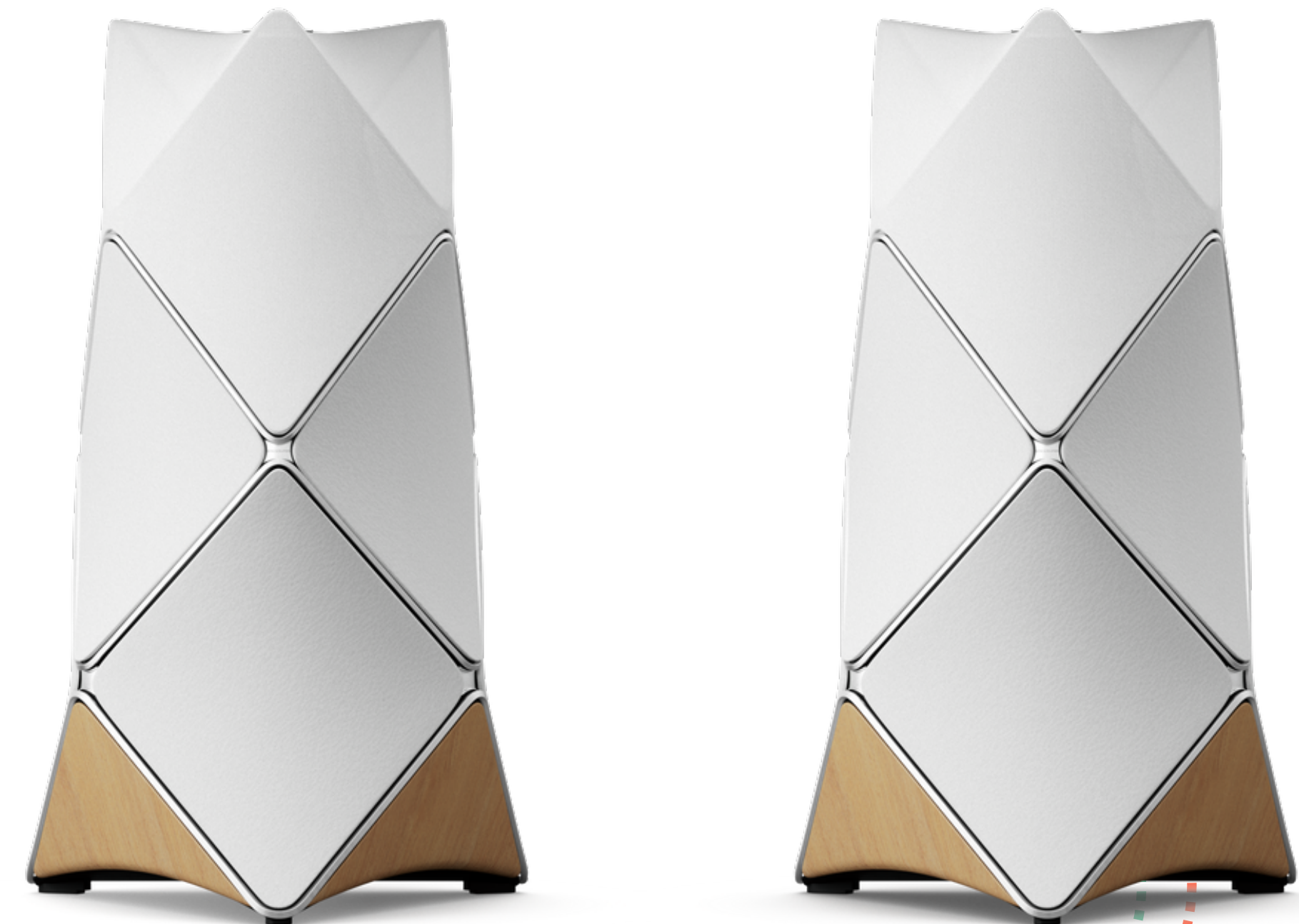
Use one of these connection methods:

## Power Link (RJ45)

- Analogue (L+R)
- Volume regulated on Beoconnect Core
- Preset information (Narrow, Wide, etc.)

## USB audio (USB-C to USB-B)

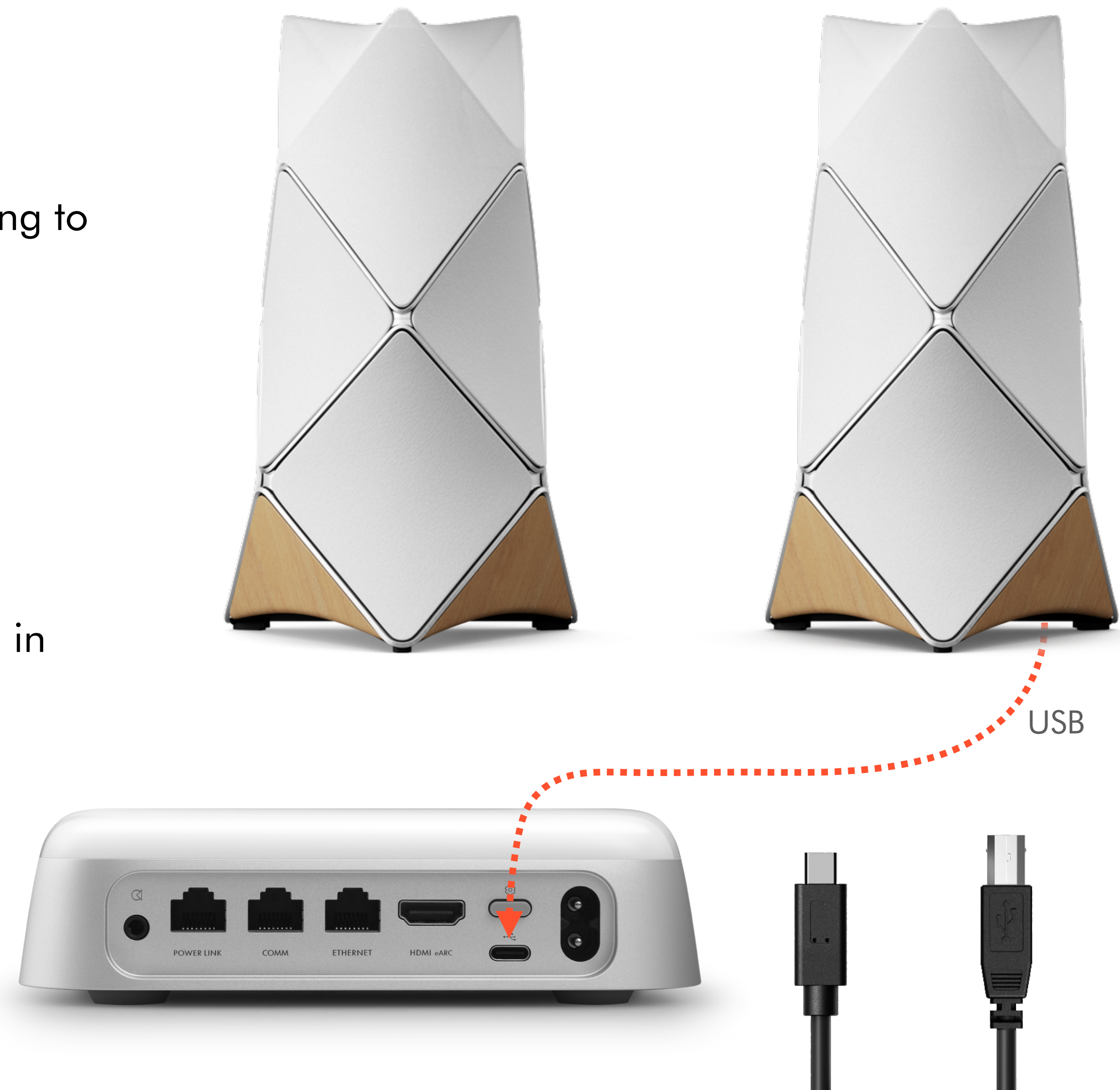
- Digital (L+R)
- Full data signal - Volume regulated internally in Beolab 50 / 90 via USB data
- No Beosonic and preset information



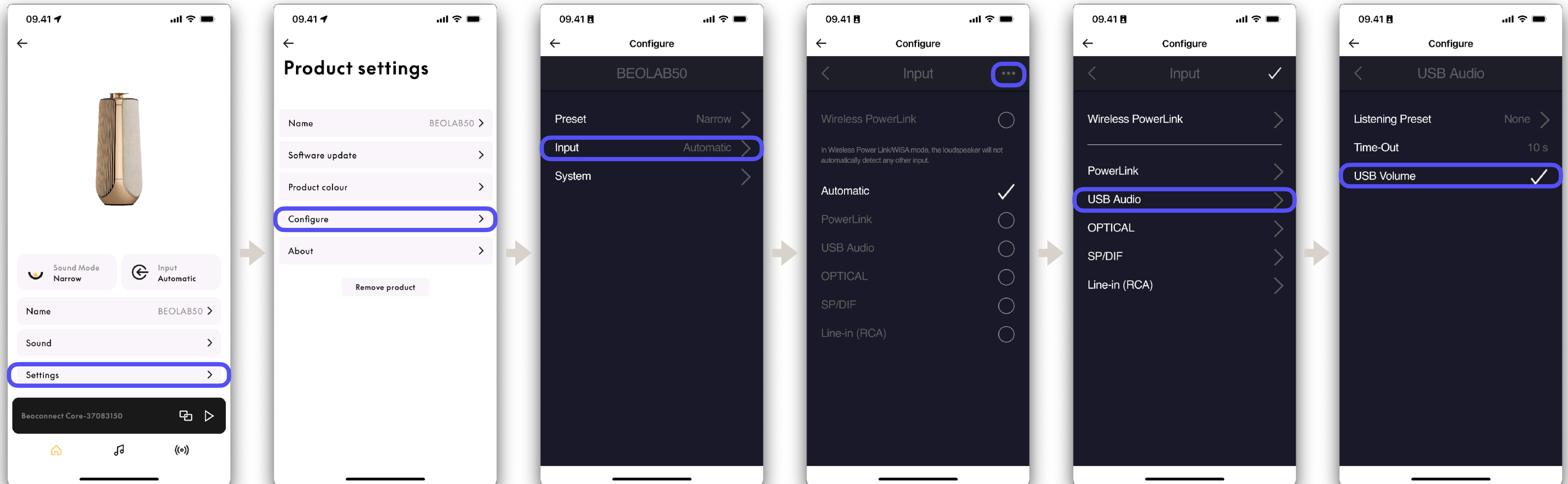
Use one of these connection methods

# USB connection

- USB-C audio output is limited to Beolab 50 & 90
- Ensure that USB-volume is enabled on Beolab 50/90 before connecting to Beoconnect Core. See next page.
- When using USB, presets cannot be set from Beosound Core
  - Adjust preset on Beolab 50 & 90 via app or remote
  - Beosonic will not change the sound when using USB
- Not recommended with video content (119ms latency in High / 45ms in Low compared to Power Link)
- Delay may be experienced when part of multiroom session
- USB cables are limited to approximately 5m



# Enable USB-volume on Beolab 50/90



# Setting up USB connection on Beoconnect Core

